

Removing your SkyControl panel



1



Disarm your Vivint system. This will prevent any false alarms while you're disconnecting your panel.

2



Unplug your panel's power source (the transformer). This should be the same plug your Vivint technician connected to your panel when your system was installed.

3



If your panel has a small screw on the top, remove it with a Phillip's screwdriver.

4



To remove your panel's front cover, push down the two safety tabs on top and pull the cover out and down. Be careful not to drop your panel, and don't be alarmed if you hear any beeping.

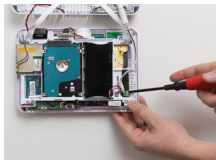
5



Hang your panel's white safety strip on the backplate.

Depending on the model of your panel, the transformer will be connected in one of three ways:

6a



Green receiver in bottom right corner

Remove the screws from the green receiver then pull out the two white wires.

Go to your transformer and pull the white wire out of the wall until you find the end. You might have to remove your outlet cover to complete this step.

6b



White plug from panel to transformer

Pull apart the white plug.

Go to your transformer and pull the white wire out of the wall until you find the end. You might have to remove your outlet cover to complete this step.

6c

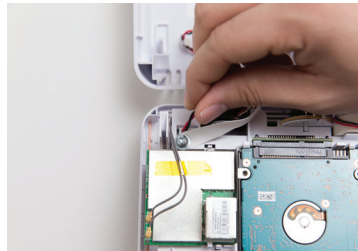


Wires connected to the transformer

Go to your transformer and remove the screws connecting the wires.

Go back to your panel and pull the white wire out of the wall until you find the end.

7



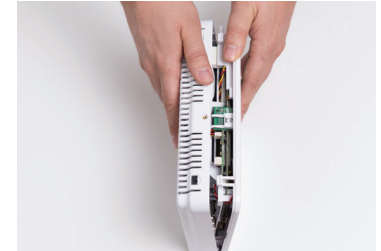
On your panel, find the black and red wire connected to the backplate. Very gently pull the wire out of your front cover.

8



Remove all the screws from the backplate and remove the backplate from your wall. Please note there will be a small hole in the wall.

9



Reassemble your panel by snapping the front cover and backplate together and replacing the top screw.

*Your disconnected panel is running on reserve battery and might continue beeping after you've removed it from the wall. This is completely normal and not a sign of false alarms.